



\$ 459,000



36860 Summerholly Cir, Palmdale, CA 93550

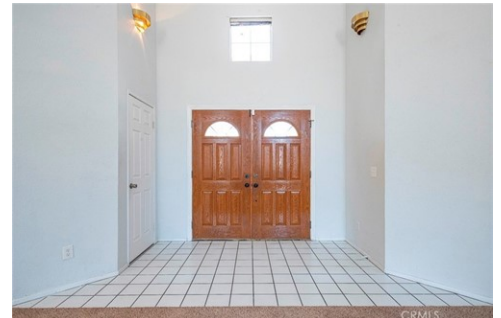
- » Beds: 3 | Baths: 2 Full
- » MLS #: SR25164281
- » Single Family | 1,410 ft² | Lot: 7,810 ft²
- » More Info: 36860SummerhollyCir.IsForSale.com



Jean Sehic
(661) 755-2597 (Mobile)
jeansehic@earthlink.net

CENTURY 21
Everest

Everest
159 Parrot Lane
Simi Valley, CA 93065



This charming single-level home is nestled in a prime location near modern amenities and offers 3 bedrooms and 2 bathrooms with over 1,410 sq. ft. blending practicality and potential for those ready to create a space of their own. Situated in a vibrant neighborhood near schools, shopping centers, and essential services, it's perfect for anyone seeking convenience with room to grow. Step outside to the true highlight: an exceptionally large backyard full of possibilities. Whether you envision a garden, outdoor entertaining area, play space, or even an ADU, this expansive lot is ready for your vision. Low-maintenance landscaping adds ease, while full fencing offers privacy and peace of mind for both relaxing afternoons and lively gatherings. Inside, sunlight fills the living room, showcasing a charming tile fireplace that adds a cozy touch. The kitchen features a breakfast bar and a casual dining area, an ideal starting point for a custom remodel. Adjacent to the kitchen, a spacious living area offers flexibility as a family room, playroom, or media space. All three bedrooms offer unique options for personalization. The primary suite includes its en-suite bathroom and a generously sized closet, while the two additional bedrooms are great for guests, home offices, or creative uses. The front yard features desert landscaping for easy upkeep, and the driveway leads to an attached garage, perfect for storage, a workshop, or a home gym. Beyond its features,

